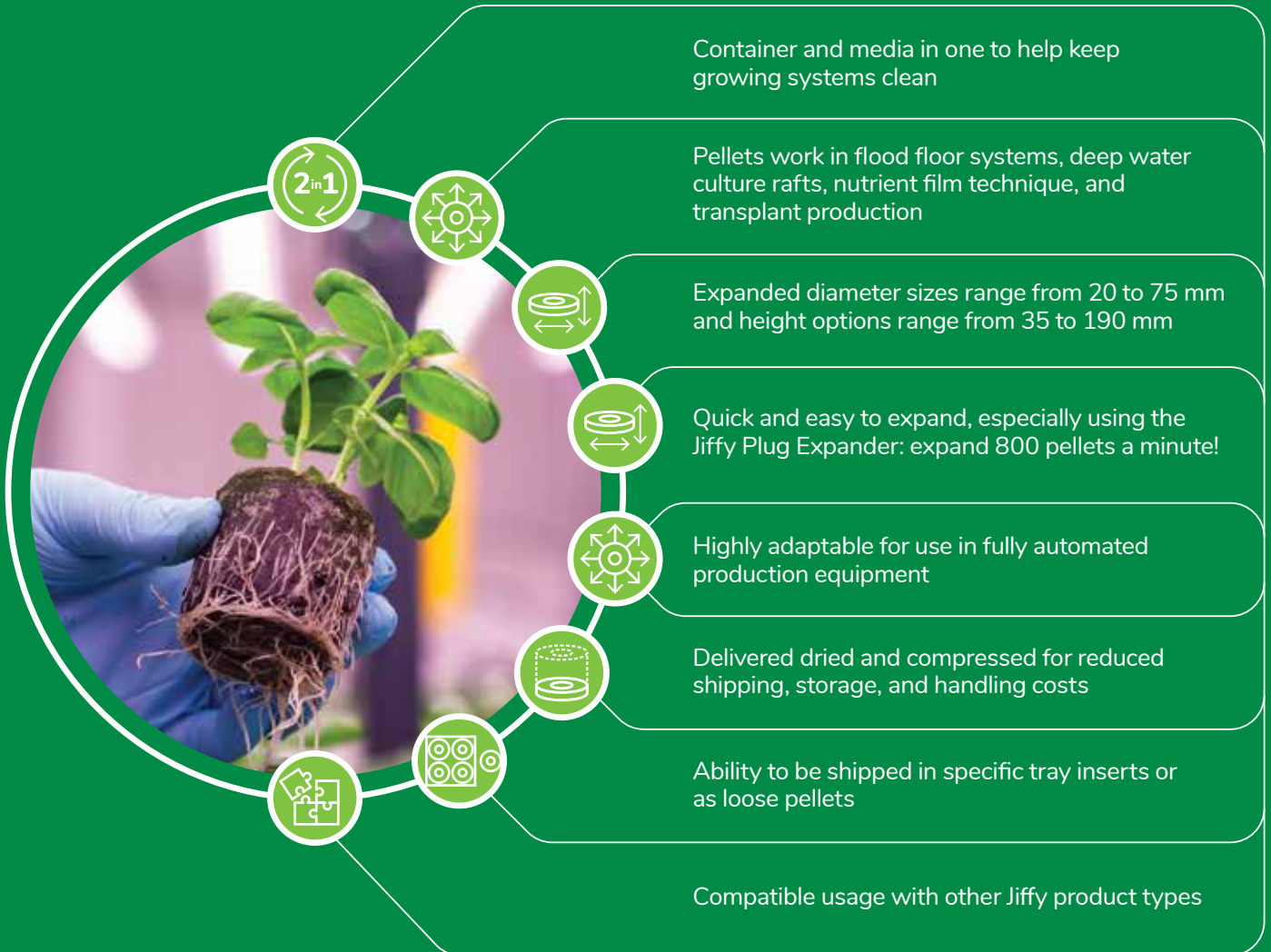


Why Jiffy Pellets for CEA?



**JIFFY
PELLETS**



● ● ●
High permeability

● ● ●
High capillarity with any moisture

30-35%
Air filled porosity

▼
pH 5.3 – 5.5
Regular pellet: EC 1.1 (+/- 0.3)
Organic pellet: EC 0.6 (+/- 0.3)



Biodegradable and Compostable
Under EU norm EN13432



**RHP, ISO 9001, ISO 22000,
OMRI Listed option**

	Jiffy 7 Pellet 100% Peat <small>(organic option available) Product of Canada</small>	Jiffy 7 Pellet 40% Coir, 60% Peat <small>Product of Norway</small>	Jiffy 7C 100% Coir <small>(organic option available) Product of Sri Lanka</small>
CATION EXCHANGE CAPACITY	<p>HIGHER due to 100% peat</p> <ul style="list-style-type: none"> The drainage pattern changes based on the size (height) of the pellet therefore a larger pellet (with less height) will cause more time for water turnover leading to a lower CEC 	<p>MEDIUM due to addition of peat</p> <ul style="list-style-type: none"> Can water and fertilize more often based on drying cycles 	<p>MEDIUM in comparison to peat</p> <ul style="list-style-type: none"> Can water and fertilize more often based on drying cycles
WATER HOLDING CAPACITY	<p>HIGHER</p> <ul style="list-style-type: none"> Due to peat (best buffering capacity and nutrient memory) 	<p>HIGHER</p> <ul style="list-style-type: none"> Due to coir, slightly lower than 100% peat pellet 	<p>MEDIUM TO HIGH</p> <ul style="list-style-type: none"> Due to mixed grades of coco pith. Fine to medium grade leads to lower WHC
NOTE	<ul style="list-style-type: none"> To change buffering capacity of peat moss it can take up to 4 – 5 days 		



Expand over
5 to 7x After soaking
 in water



★ Popular item
Jiffy 7 Organic Peat Pellet for lettuce and herbs

- 36 x 41mm 11mm indent, with hole, 72 cavities/insert, 29 trays/carton – 2099 pellets per case.
- 4 cm (diameter, after expansion) plugs including the trays.
- Also available in coir pith organic (peat free).



Developing sustainable plant growing solutions together

JIFFY PRODUCTS INTERNATIONAL BV
 Tel.: +31 78 20 62 100
 E-mail: sales@jiffygroup.com
www.jiffygroup.com

JIFFY PRODUCTS OF AMERICA INC.
 Toll Free 1-800-323-1047 (North America only)
 E-mail: prosales@jiffygroup.com
www.jiffygroup.com